

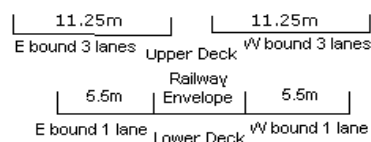
YEAR 2013

CORE STATION 5027

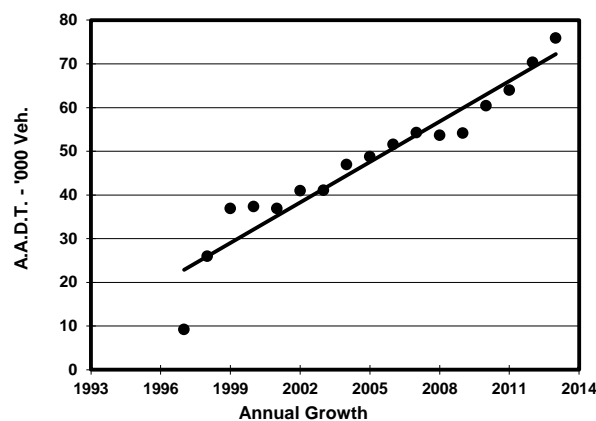
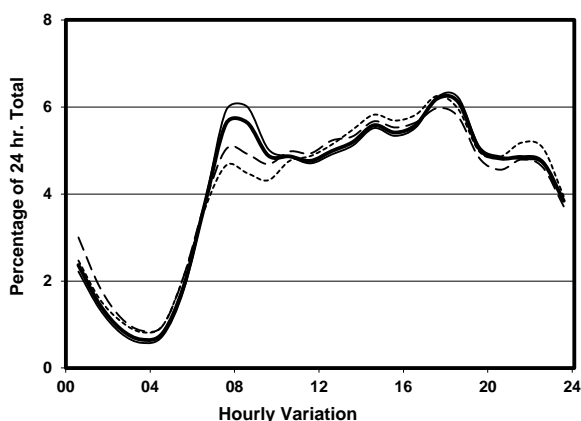
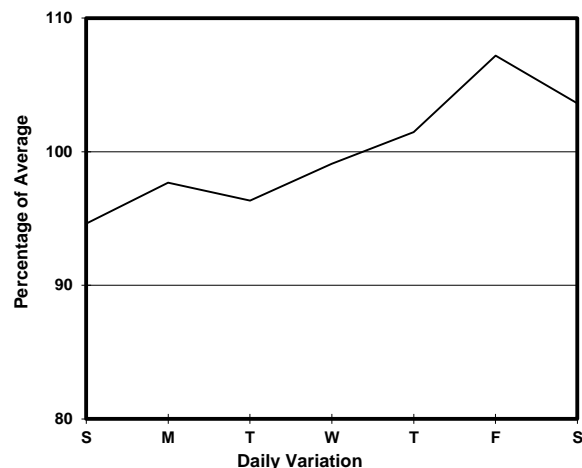
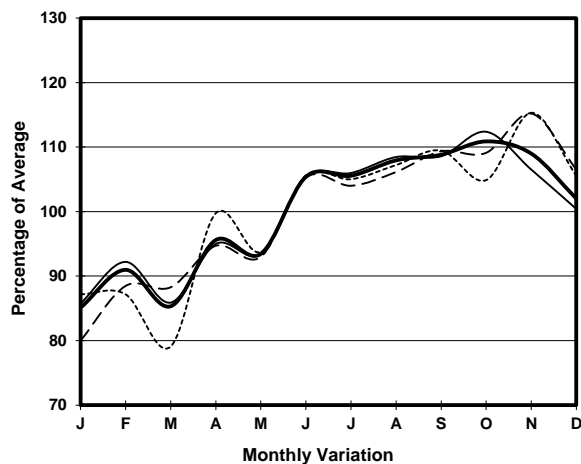
ROAD NETWORK MAJOR

ROAD TYPE EXPRESSWAY

LINK LANTAU LINK (from TSING MA BRIDGE EASTERN END  
AT TSING YI to NGONG SHUEN AU)



## 1. TRAFFIC FLOW VARIATION AND GROWTH



## 2. TRAFFIC CHARACTERISTICS (BY DIRECTION)

Parameter	All - Day	Mon. - Fri.	Sat.	Sun.
<b>EAST BOUND</b>				
A.A.D.T.	36500	36800	38030	34340
R 12 / 24 - %	63.4	64.1	62	60.9
R 16 / 24 - %	83.5	84	81.6	82.7
AM Peak Hour	0800-0900	0800-0900	0800-0900	0800-0900
One-way flow at AM peak hour	1710	1790	1670	1380
T - % (AM)	-	15	-	-
PM Peak Hour	1800-1900	1800-1900	1800-1900	1800-1900
One-way flow at PM peak hour	2650	2750	2490	2350
T - % (PM)	-	18	-	-
Prop.of commercial vehicles - 16 hr.	-	21.1	-	-
<b>WEST BOUND</b>				
A.A.D.T.	39380	39670	41220	36980
R 12 / 24 - %	66.2	66.6	65.2	65.4
R 16 / 24 - %	85	85.6	83.3	83.9
AM Peak Hour	0700-0800	0800-0900	0700-0800	0700-0800
One-way flow at AM peak hour	2600	2800	2420	1990
T - % (AM)	-	16	-	-
PM Peak Hour	1700-1800	1700-1800	1700-1800	1700-1800
One-way flow at PM peak hour	2210	2210	2340	2190
T - % (PM)	-	27.1	-	-
Prop.of commercial vehicles - 16 hr.	-	22.9	-	-

## 3. OTHER INFORMATION AND COMMENT

**4. Vehicle classification and occupancy - Monday to Friday**

Time		Class of vehicle									
		Motor Cycle	Private Car	Taxi	Private LB	PLB	Goods veh.		Non Fr. Bus	Fr. Bus	
							Light	M & H		SD	DD
0700-0800	Pro	2.2	32.1	34.8	0.6	0.0	9.4	10.4	5.4	0.1	5.1
	Ocp	1.0	1.6	2.0	3.8	0.0	1.8	1.2	39.0	8.5	54.8
0800-0900	Pro	1.4	44.5	26.3	0.2	0.0	12.0	9.1	2.7	0.1	3.9
	Ocp	1.0	1.4	1.9	3.5	0.0	1.7	1.3	17.1	28.0	55.7
0900-1000	Pro	0.7	35.8	26.4	0.2	0.0	13.4	11.9	6.1	0.2	5.2
	Ocp	1.0	1.4	2.1	1.5	0.0	1.5	1.3	11.1	11.8	29.1
1000-1100	Pro	0.3	32.2	23.9	0.6	0.0	17.0	16.2	5.3	0.1	4.4
	Ocp	1.0	1.7	2.2	1.4	0.0	1.4	1.2	10.8	11.2	22.2
1100-1200	Pro	0.1	34.6	22.5	0.4	0.0	18.5	14.3	5.0	0.2	4.5
	Ocp	1.0	1.8	2.4	3.0	0.0	1.5	1.2	6.6	8.5	22.4
1200-1300	Pro	0.3	38.2	26.6	0.1	0.0	13.9	11.4	4.8	0.1	4.5
	Ocp	1.3	1.8	2.3	1.0	0.0	1.5	1.2	6.7	11.8	22.2
1300-1400	Pro	0.8	36.5	25.1	0.3	0.0	15.3	13.2	4.0	0.2	4.7
	Ocp	1.1	1.9	2.6	2.0	0.0	1.5	1.2	10.9	7.3	28.8
1400-1500	Pro	0.2	35.3	25.7	0.6	0.0	16.3	13.9	4.3	0.1	3.7
	Ocp	1.0	1.8	2.3	1.7	0.0	1.5	1.3	9.7	11.8	27.3
1500-1600	Pro	0.5	34.7	23.7	0.6	0.0	16.9	14.7	4.3	0.2	4.2
	Ocp	1.2	1.7	2.4	2.3	0.0	1.6	1.2	11.2	8.5	25.1
1600-1700	Pro	0.5	36.3	24.5	1.2	0.0	15.1	12.7	5.4	0.1	4.1
	Ocp	1.0	1.6	2.4	3.4	0.0	1.5	1.2	12.7	11.8	36.9
1700-1800 Peak hour	Pro	1.3	36.6	23.6	0.6	0.0	12.9	14.3	6.6	0.1	4.1
	Ocp	1.2	1.7	2.2	2.5	0.0	1.7	1.2	14.6	9.0	44.0
1800-1900	Pro	1.1	50.6	17.2	0.4	0.0	10.1	11.0	5.5	0.1	4.1
	Ocp	1.0	1.5	2.3	2.3	0.0	1.4	1.2	15.9	16.3	56.5
1900-2000	Pro	0.8	46.9	21.4	0.0	0.0	10.7	10.6	4.0	0.2	5.5
	Ocp	1.3	2.0	2.4	0.0	0.0	1.5	1.2	11.6	6.0	38.3
2000-2100	Pro	0.8	38.9	29.4	0.0	0.0	9.1	14.3	2.6	0.2	4.7
	Ocp	1.3	1.9	2.5	0.0	0.0	1.3	1.1	20.9	15.3	34.2
2100-2200	Pro	0.9	36.9	35.8	0.5	0.0	5.9	11.0	3.3	0.3	5.4
	Ocp	1.3	2.1	2.2	1.3	0.0	1.3	1.1	3.8	11.0	36.2
2200-2300	Pro	0.7	39.8	28.0	0.0	0.0	6.4	16.2	3.2	0.1	5.5
	Ocp	1.0	1.7	2.4	0.0	0.0	1.3	1.2	4.8	9.5	35.0
16 hours	Pro	0.8	38.3	25.6	0.4	0.0	12.9	12.7	4.6	0.1	4.5
	Ocp	1.1	1.7	2.3	2.5	0.0	1.5	1.2	13.5	10.7	36.1

**Legend**

- Pro.** Proportion of vehicles in % (Sum may not add up to 100% due to figure rounding)
- Ocp.** Average occupancy of vehicles
- M&H** Medium and Heavy